



THOR STORM

INSTALLATION INSTRUCTIONS



CONTENTS

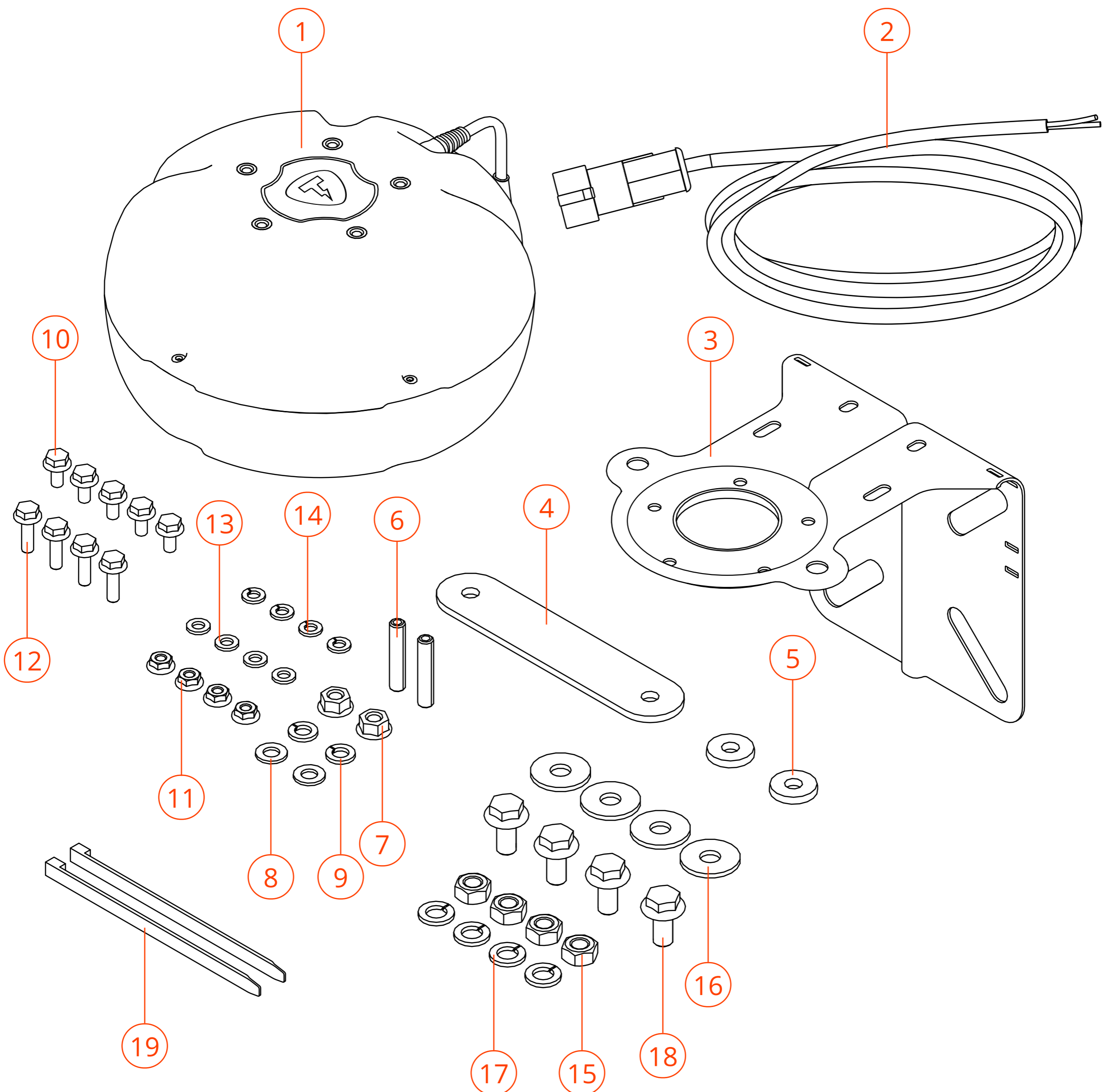
General information	4
General recommendations	6
Security measures	7
Installation rules	7
Methods of installation	8
Installation sequence	8
Installation location	9
Installation methods	10
Bracket modification	18
Warranty conditions	19
Information about the manufacturer	20

GENERAL INFORMATION

The THOR STORM column is a component of the THOR electronic exhaust system (hereinafter referred to as the “column”). It consists of a low-frequency speaker housed in a plastic enclosure and connects directly to the THOR electronic control unit.

Dimensions of the THOR STORM column: 117 × 214 mm

Weight of the THOR STORM column: 1.94 kg



EQUIPMENT

1. Column THOR STORM — 1 pcs
2. 5 m cable with connector — 1 pcs
3. Bracket — 1 pcs
4. Mounting plate with bitumen layer — 1 pcs (package № 1)
5. Extended washer with bitumen layer— 2 pcs (package № 1)
6. M8x40 ISO Stud 4026 — 2 pcs (package № 2)
7. Flange nut M8 ISO 4161 / DIN 6923 — 2 pcs (package № 2)
8. Washer M8 ISO 7089 — 2 pcs (package № 2)
9. Spring washer M8 DIN 127 — 2 pcs (package № 2)
10. Hexagon socket head cap screw M6x12 DIN 6921 — 5 pcs (package № 3)
11. Flange nut M6 ISO 4161 / DIN 6923 — 4 pcs (package № 4)
12. Hexagon socket head cap screw M6x20 DIN 6921 — 4 pcs (package № 4)
13. Washer M6 ISO 7089 — 4 pcs (package № 4)
14. Spring washer M6 DIN 127 — 4 pcs (package № 4)
15. Nut M10 ISO 4032 — 4 pcs (package № 5)
16. Extended washer M10 ISO 7093 — 4 pcs (package № 5)
17. Spring washer M10 DIN 127 — 4 pcs (package № 5)
18. Hexagon socket head cap screw M10x25 DIN 6921 — 4 pcs (package № 5)
19. Nylon cable tie 8x150 mm — 2 pcs
20. Instructions — 1 pcs

GENERAL RECOMMENDATIONS

If you lack experience installing electronic automotive components, we recommend seeking professional installation services. Improper installation may cause damage to your vehicle or THOR electronic exhaust system components. In such cases, THOR assumes no liability for any resulting damage.

If you encounter any difficulties connecting the components of the THOR electronic exhaust system, please contact THOR Technical Support for installation guidance.

Technical
support contacts:

Phone / WhatsApp: +7 495 133 85 89
E-mail: service@thor-tuning.com

To ensure successful installation of the THOR STORM, follow these recommendations:

- The mounting surface for the column must be sufficiently rigid and capable of withstanding high vibration loads.
- During installation of the THOR electronic exhaust system, ensure that all plastic components of the column do not come into contact with any parts of the vehicle body.
- Maintain a minimum clearance of 5 cm between all THOR electronic exhaust system components and any vehicle parts susceptible to high-temperature exposure.
- When connecting THOR system components to the vehicle using wires without factory connectors, always use proper crimp connectors and a crimping tool.
- Secure wiring within vehicle cavities using cable ties, ensuring even tension and preventing strain or abrasion.
- Before installation, carefully review the official installation guide available on the manufacturer's website: <https://thor-tuning.com>



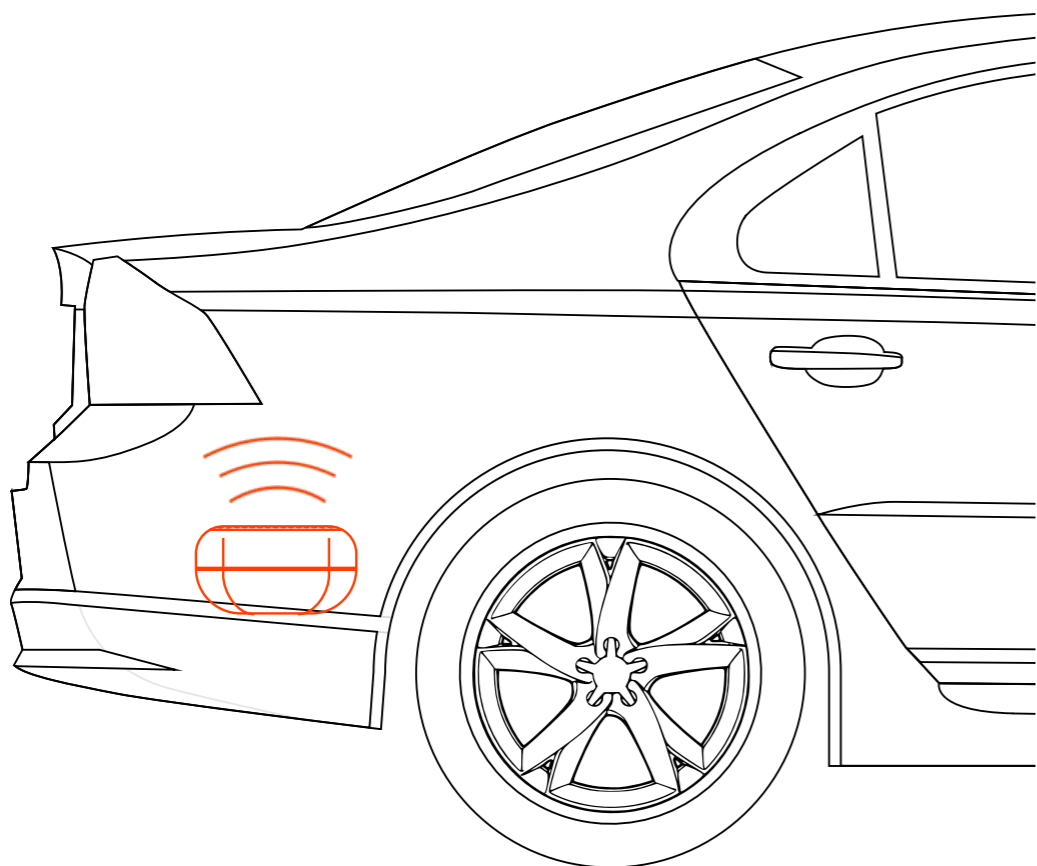
SECURITY MEASURES

- Installation of the column by individuals who are not authorized employees of authorized sales centers or authorized service centers of the manufacturer.
- Connection of the column to components outside the THOR electronic exhaust system or to electronic exhaust systems from other manufacturers.
- Installation of the column using defective, damaged, or faulty tools.
- Installation of the column without the use of appropriate personal protective equipment.

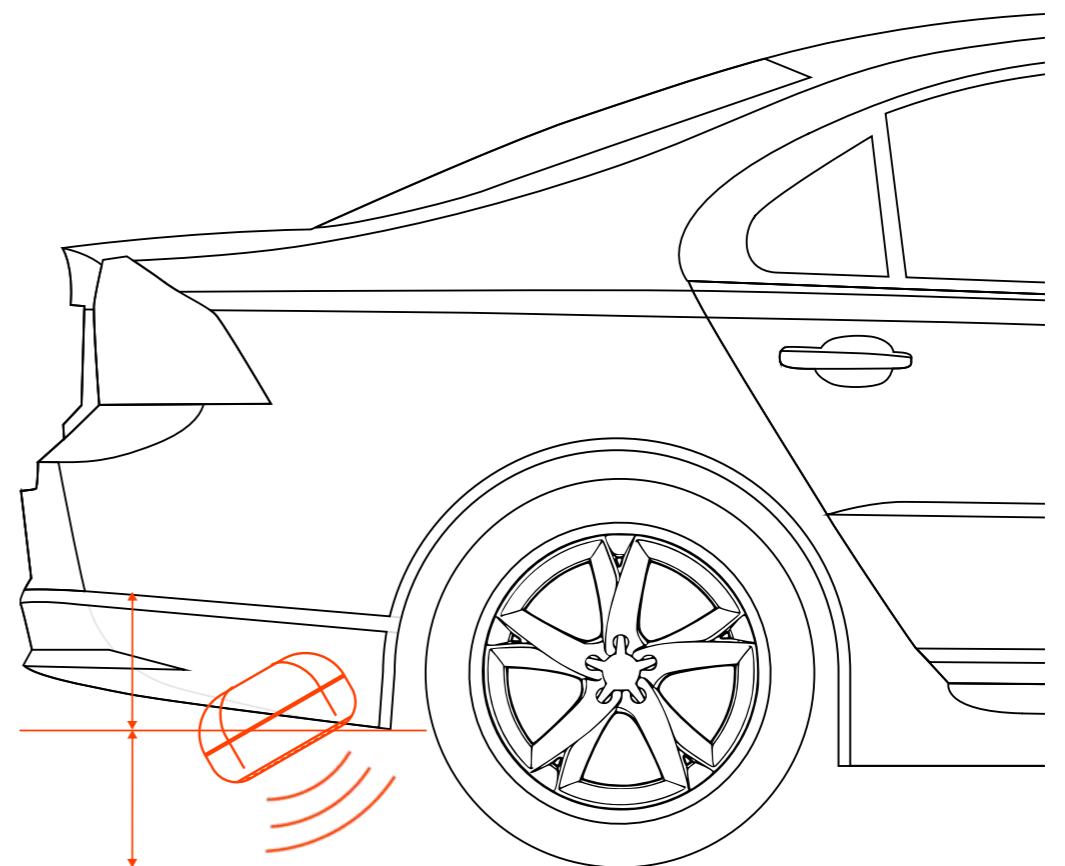
INSTALLATION RULES

IMPORTANT! Failure to comply with the stated guidelines will void the manufacturer's warranty.

- Installation of the column directly adjacent to engine components, the vehicle's exhaust system, or the exhaust manifold.
- Installation of the column while the engine is running or the vehicle's ignition is turned on.



The THOR STORM speaker must not be installed with the front side facing upward or in the direction of vehicle movement.



The THOR STORM speaker must not be positioned below the vehicle's ground clearance.

METHODS OF INSTALLATION

The THOR STORM mounting kit allows for installation of the column in multiple orientations. The column may be secured to the vehicle body or the exhaust system.

The mounting components may be modified by the installer as needed.

IMPORTANT! The bracket length may be shortened to any required dimension for optimal installation ease. The most suitable methods for bracket modification are described in the section «Bracket modification».

INSTALLATION SEQUENCE

To install the THOR STORM speaker, follow these steps:

1. Select a suitable location, the appropriate mounting hardware, and the installation method (see the section "Mounting Methods").
2. If necessary, modify the mounting bracket (refer to the section "Bracket Modification").
3. Secure the speaker using the fasteners included in the kit.
4. Route the THOR STORM cable into the vehicle cabin through the standard technical openings, ensuring proper sealing.
5. Connect the speaker to the cable using the connector.
6. Connect the THOR STORM speaker to the THOR electronic control unit.
7. After installation, start the vehicle's engine and verify the proper operation of the THOR electronic exhaust system.

IMPORTANT! For the THOR electronic exhaust system to function correctly, it is necessary to first connect the THOR mobile application to the electronic control unit and select the vehicle brand.

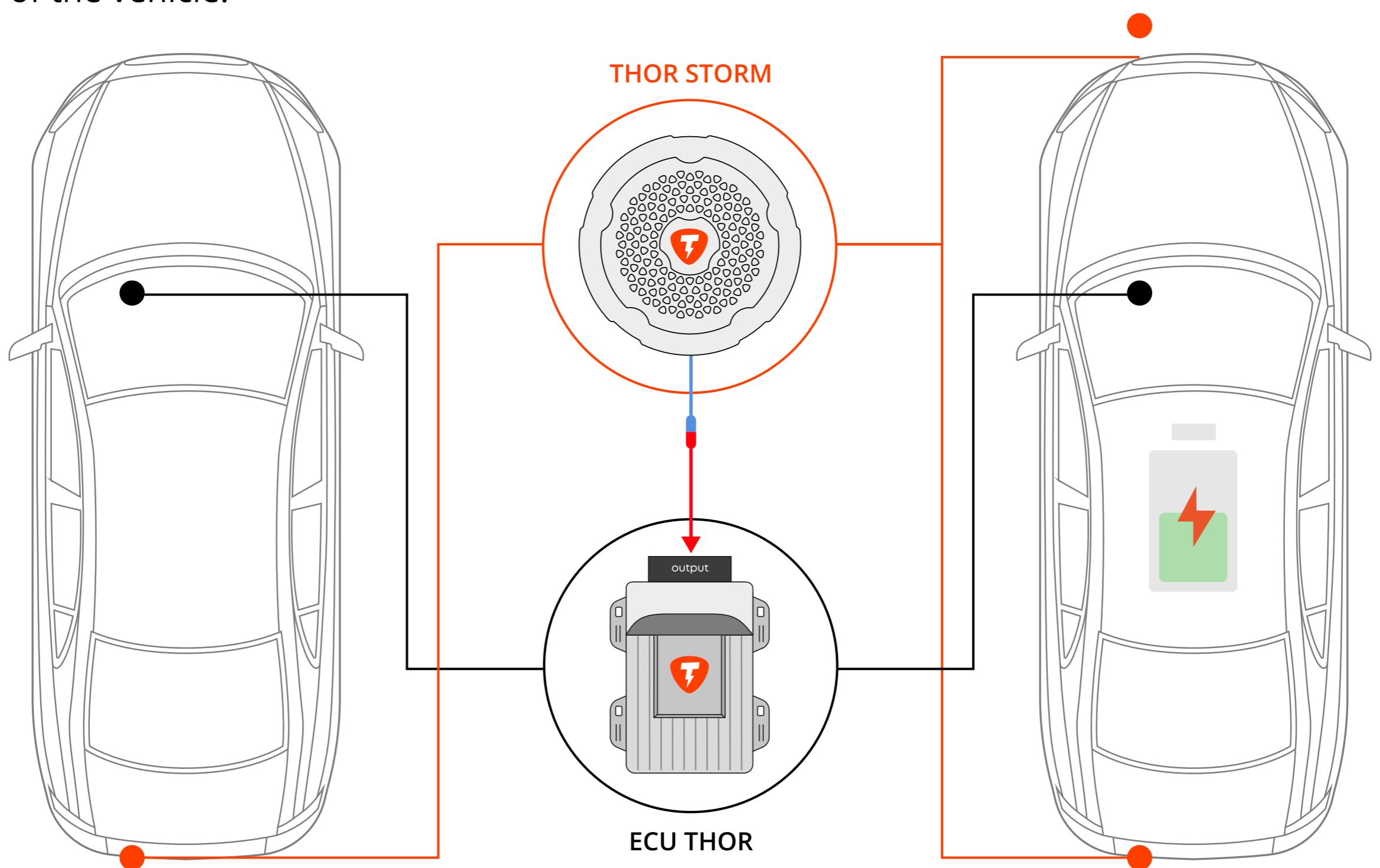


INSTALLATION LOCATION

For vehicles with internal combustion engines, installation of the THOR STORM column is permitted only in the rear section of the vehicle, specifically on the following components:

- Rear bumper subframe
- Rear bumper reinforcement
- Rear exhaust system pipes
- Rear underbody panel

For electric vehicles, installation of the THOR STORM column is permitted in any area of the vehicle.



IMPORTANT! It is necessary to securely fasten the connector and the speaker cable within the vehicle's cargo area compartments.

IMPORTANT! Avoid installing the speaker and laying the cable in areas where the plastic components of the THOR electronic exhaust system may be subject to mechanical and/or thermal stresses.

INSTALLATION METHODS

METHOD 1

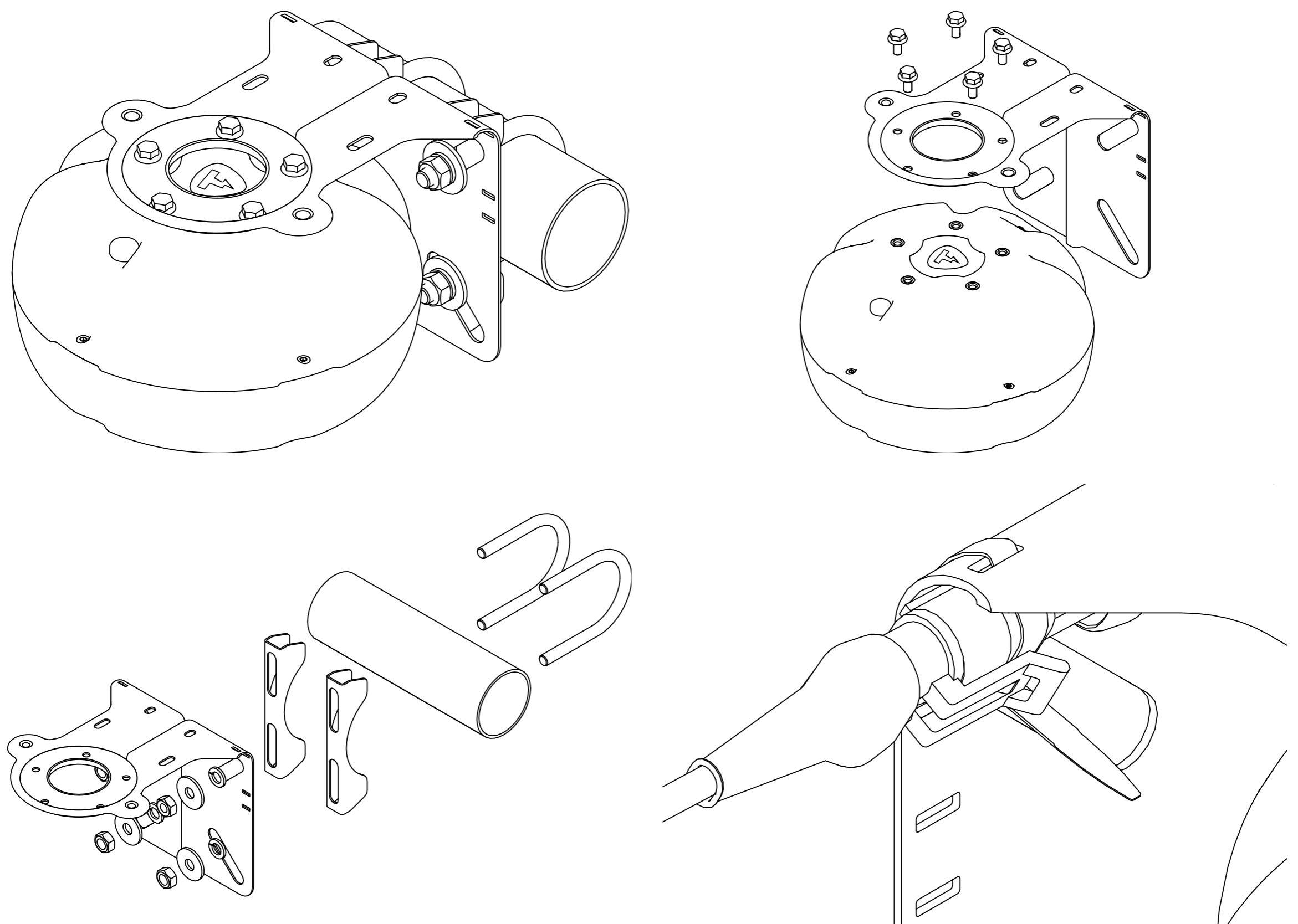
The installation is carried out using a bracket attached to the vehicle's exhaust system.

IMPORTANT! For this installation method, you need to use a set of two U-bolt clamps, with a diameter corresponding to that of the exhaust pipe. U-bolt clamps are purchased separately and are not included in the delivery kit.

Required fasteners:

- Bracket — 1 pc.
- Fastener package no. 3
- U-shaped bracket assembly — 2 pcs. (not included in the delivery package)

Modification of the bracket is not required.



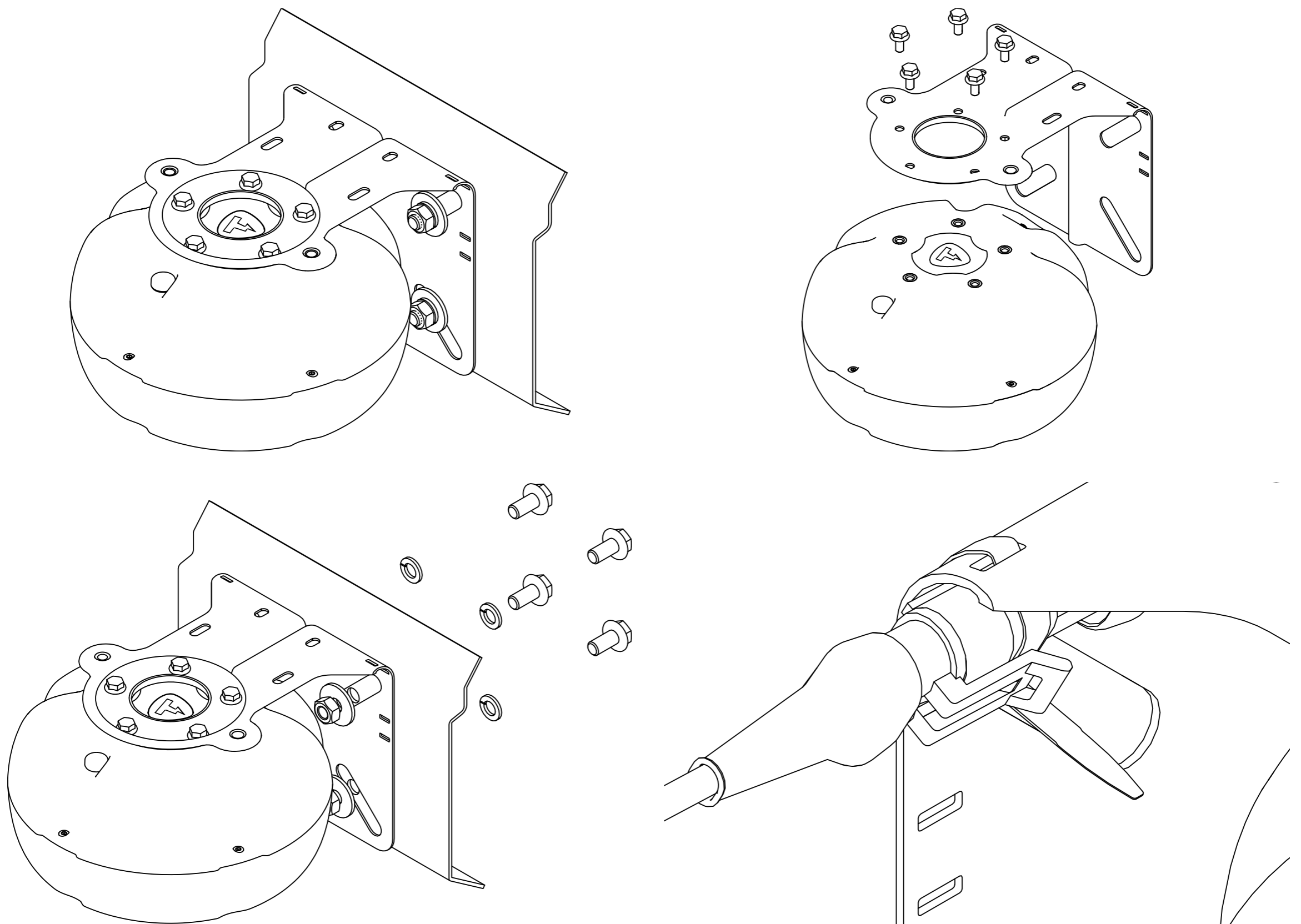
METHOD 2

The installation is carried out using a bracket attached to the vehicle's body.

Required fasteners:

- Bracket — 1 pc.
- Fastener package no. 3
- Fastener package no. 5

Modification of the bracket is not required.



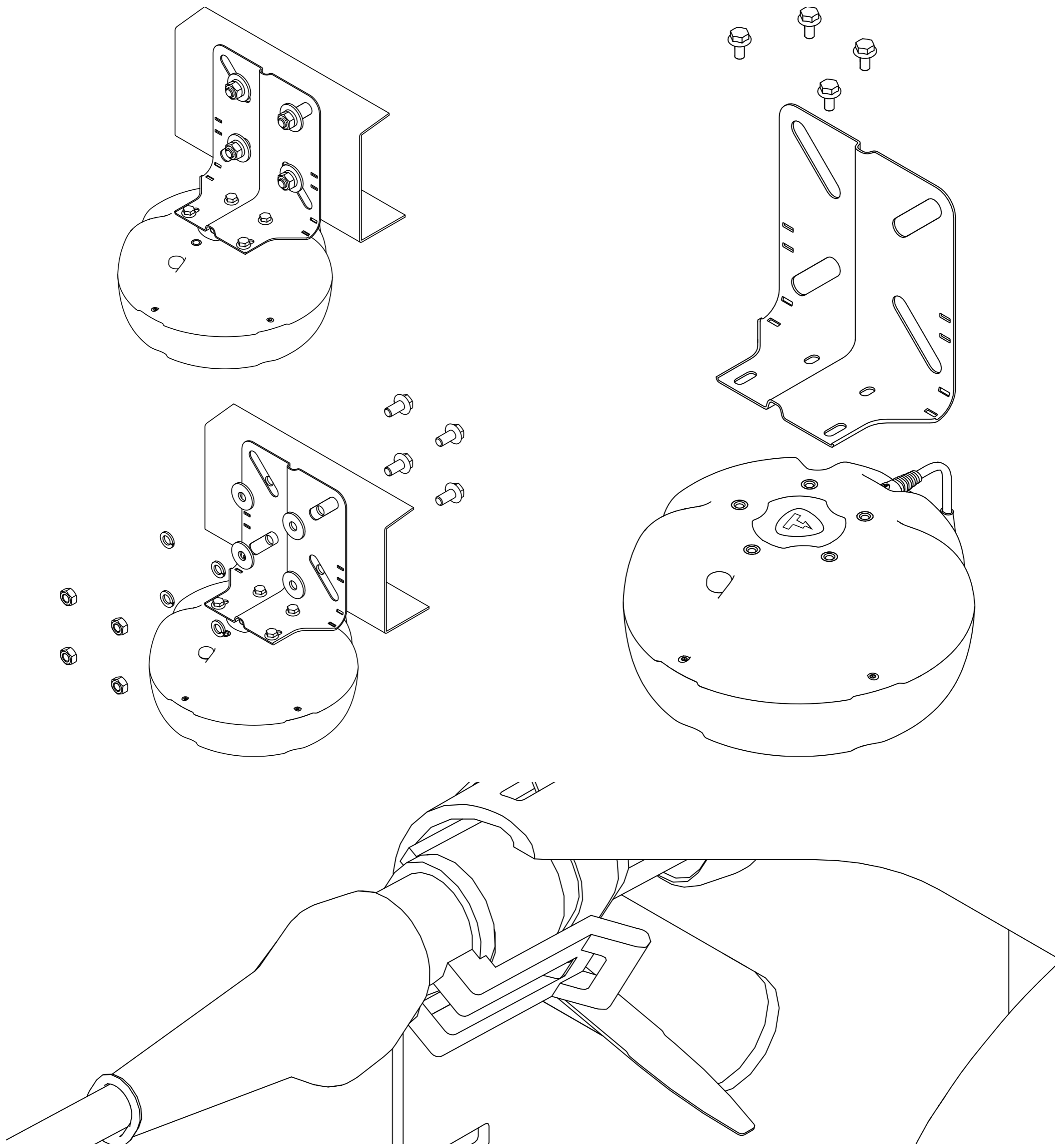
METHOD 3

The installation is carried out using a bracket attached to the vehicle's body.

Required fasteners:

- Bracket — 1 pc.
- Fastener package no. 3 (partially)
- Plastic bag fasteners no. 5

The bracket needs to be shortened along line no. 3 on the template.



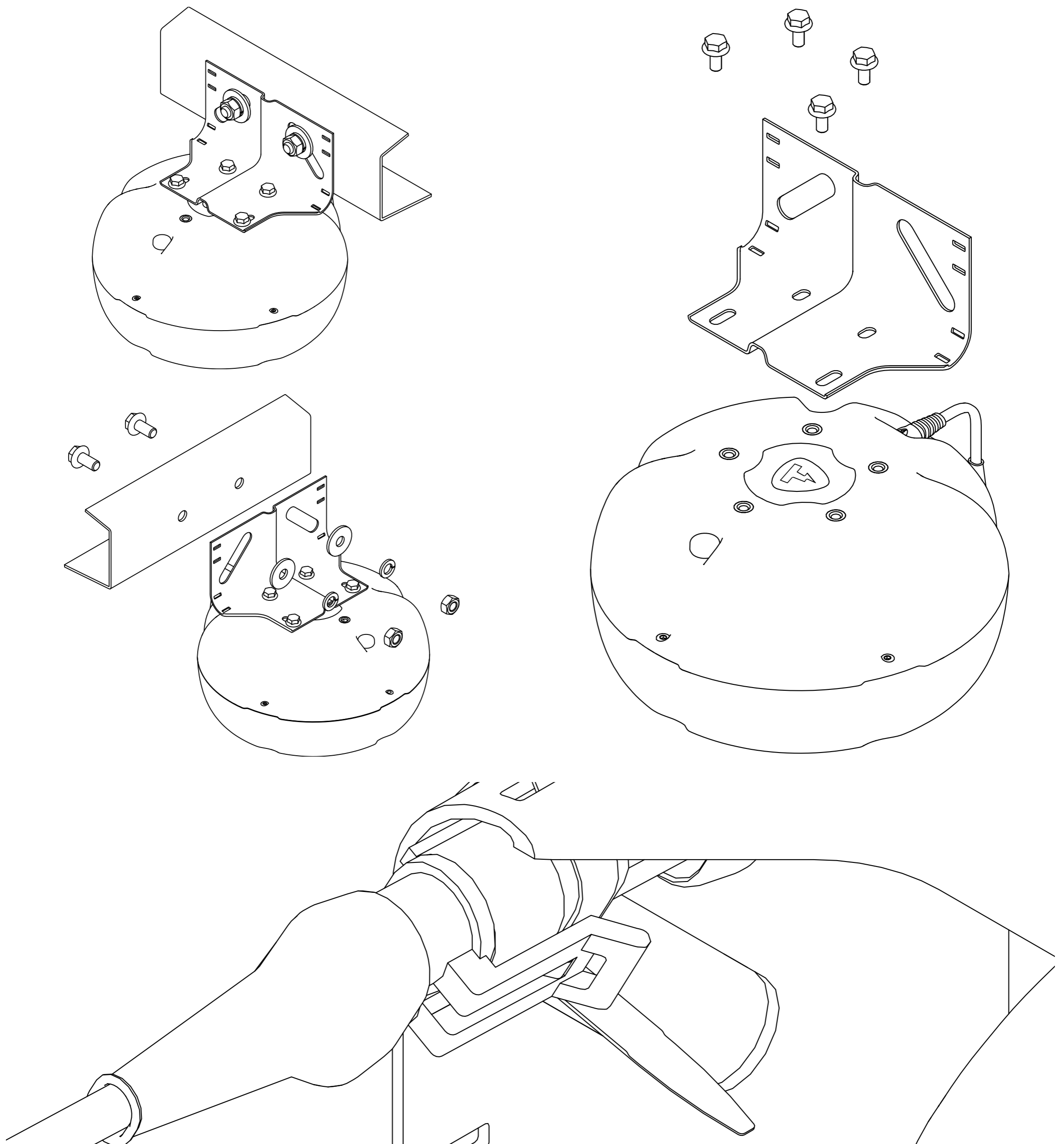
METHOD 4

The installation is carried out using a bracket attached to the vehicle's body.

Required fasteners:

- Bracket — 1 pc.
- Fastener package no. 3 (partially)
- Plastic bag fasteners no. 5 (partially)

The bracket needs to be shortened along lines no. 1 and no. 3 on the template.



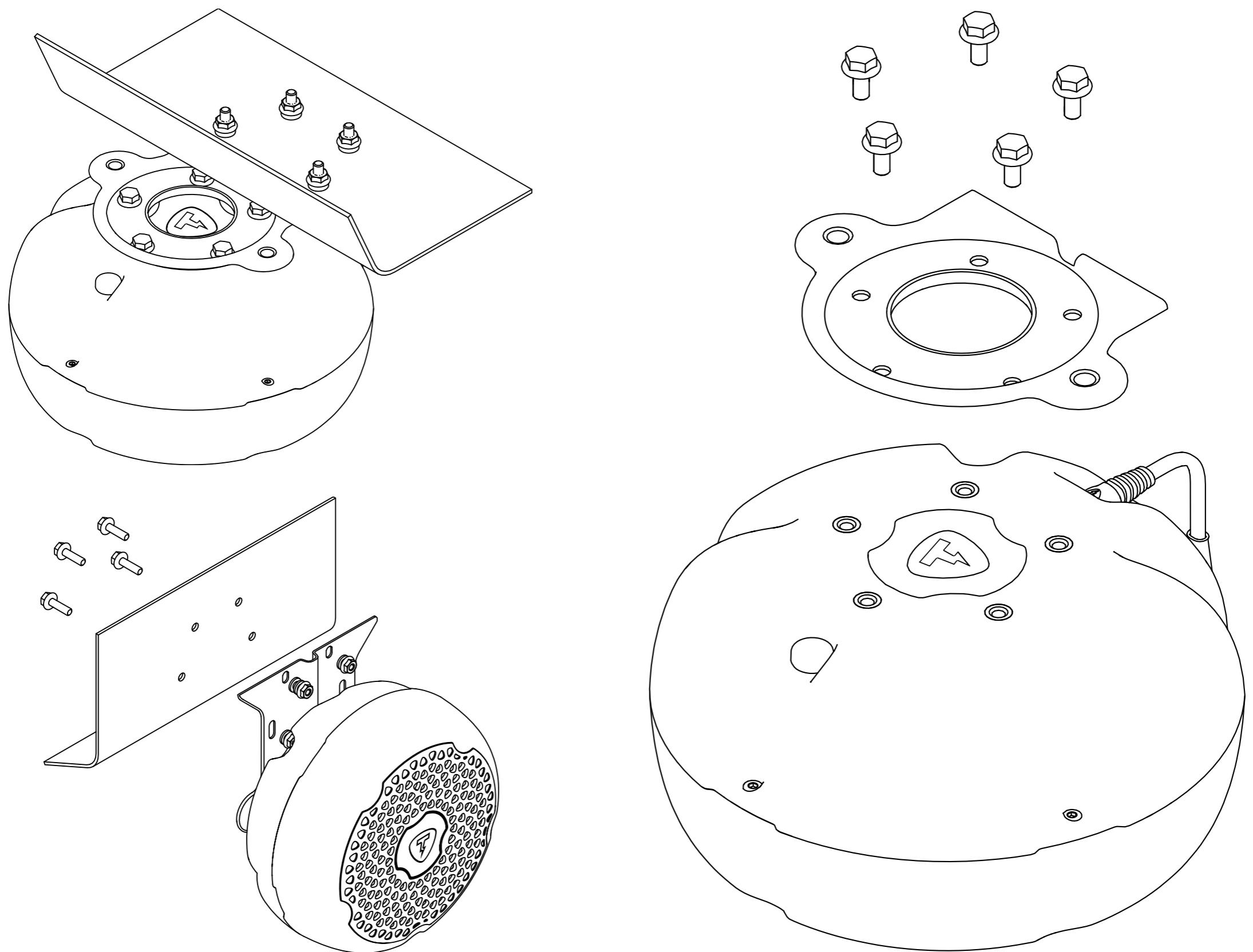
METHOD 5

The installation is carried out using a bracket attached to the vehicle's body.

Required fasteners:

- Bracket — 1 pc.
- Fastener package no. 3
- Plastic bag fasteners no. 4

The bracket needs to be shortened along line no. 2 on the template.



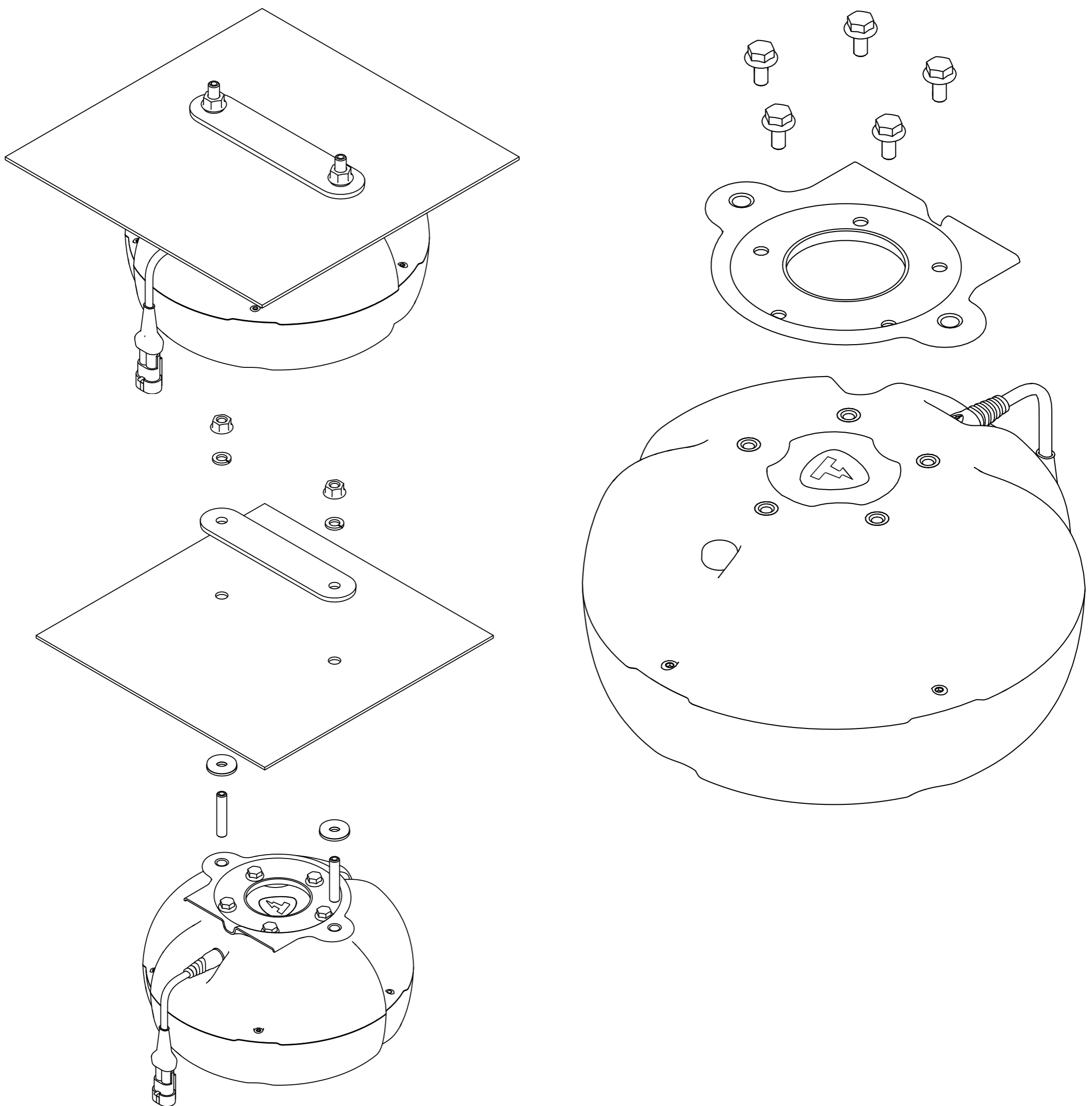
METHOD 6

The installation is performed using a mounting plate and a bracket secured to the vehicle's body.

Required fasteners:

- Bracket — 1 pc.
- Fastener package no. 3
- Plastic bag fasteners no. 2
- Plastic bag fasteners no. 1

The bracket needs to be shortened along line no. 3 on the template.



METHOD 7

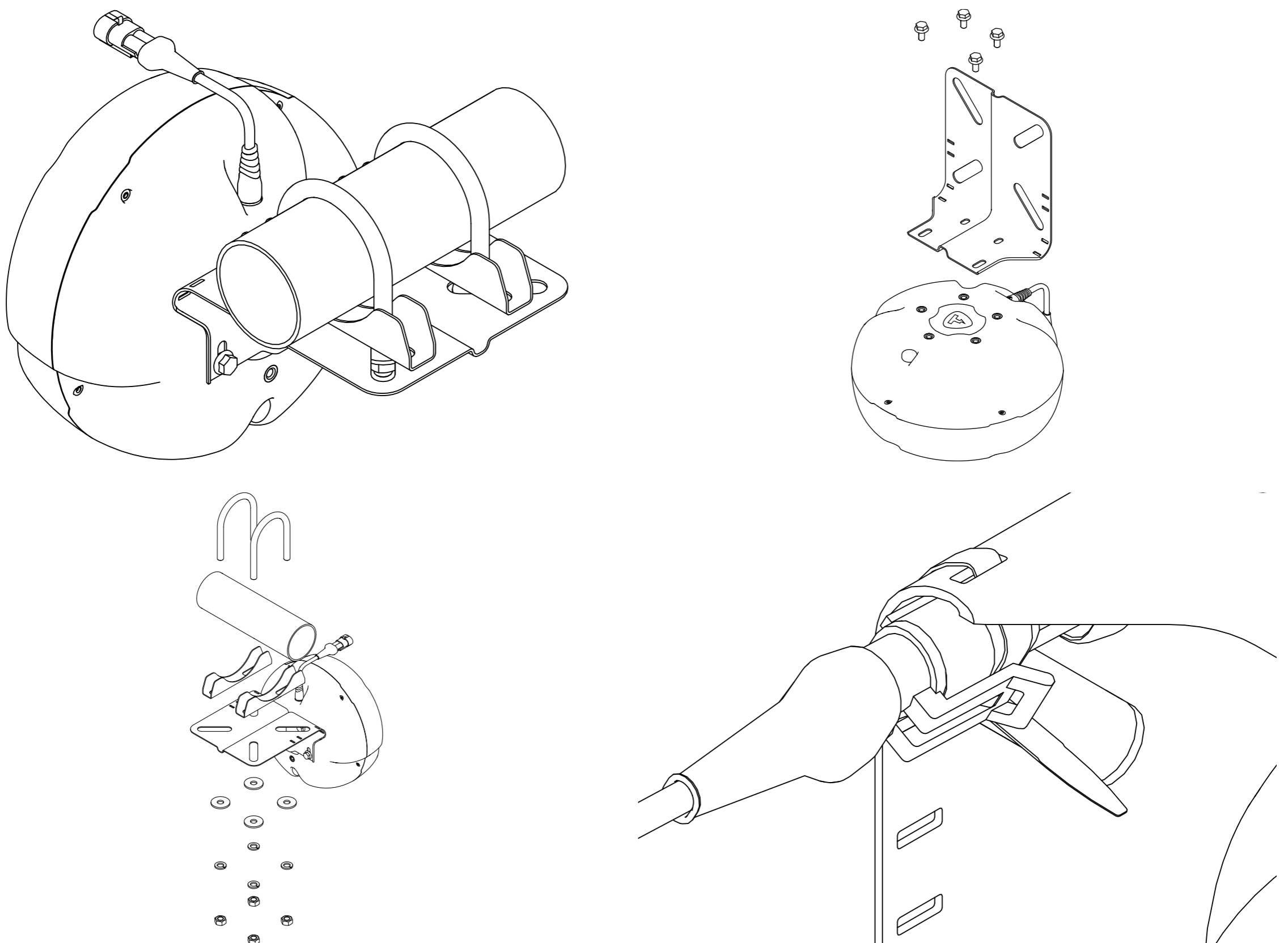
The installation is done using a bracket attached to the vehicle's exhaust system.

IMPORTANT! For this installation method, you need to use a set of two U-bolt clamps, with a diameter corresponding to that of the exhaust pipe. U-bolt clamps are purchased separately and are not included in the delivery kit.

Required fasteners:

- Bracket — 1 pc.
- Fastener package no. 3 (partial)
- U-shaped bracket assembly — 2 pcs. (not included in the delivery package)

The bracket needs to be shortened along line no. 3 on the template.



METHOD 8

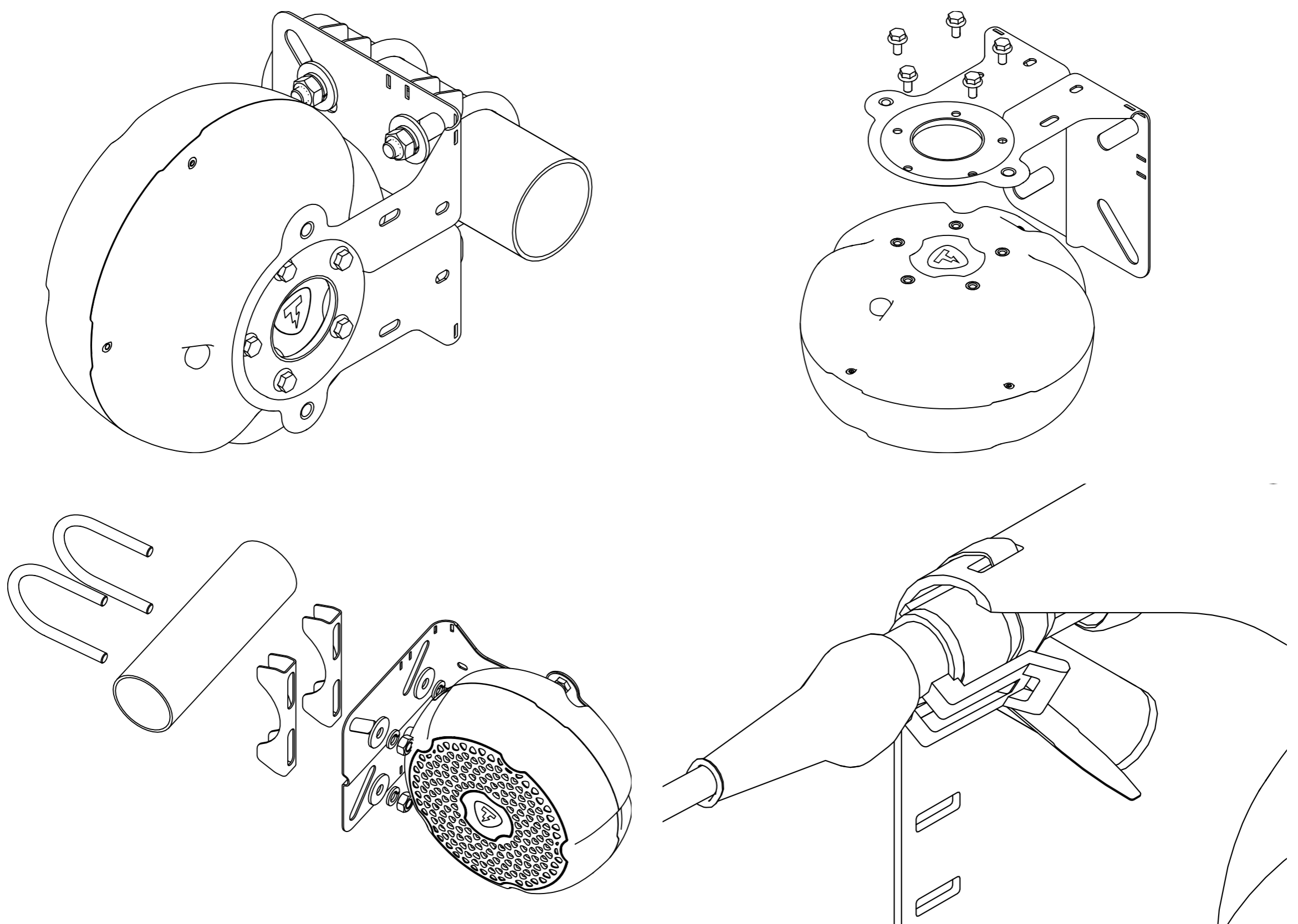
The installation is done using a bracket attached to the vehicle's exhaust system.

IMPORTANT! For this installation method, you need to use a set of two U-bolt clamps, with a diameter corresponding to that of the exhaust pipe. U-bolt clamps are purchased separately and are not included in the delivery kit.

Required fasteners:

- Bracket — 1 pc.
- Fastener package no. 3
- U-shaped bracket assembly — 2 pcs. (not included in the delivery package)

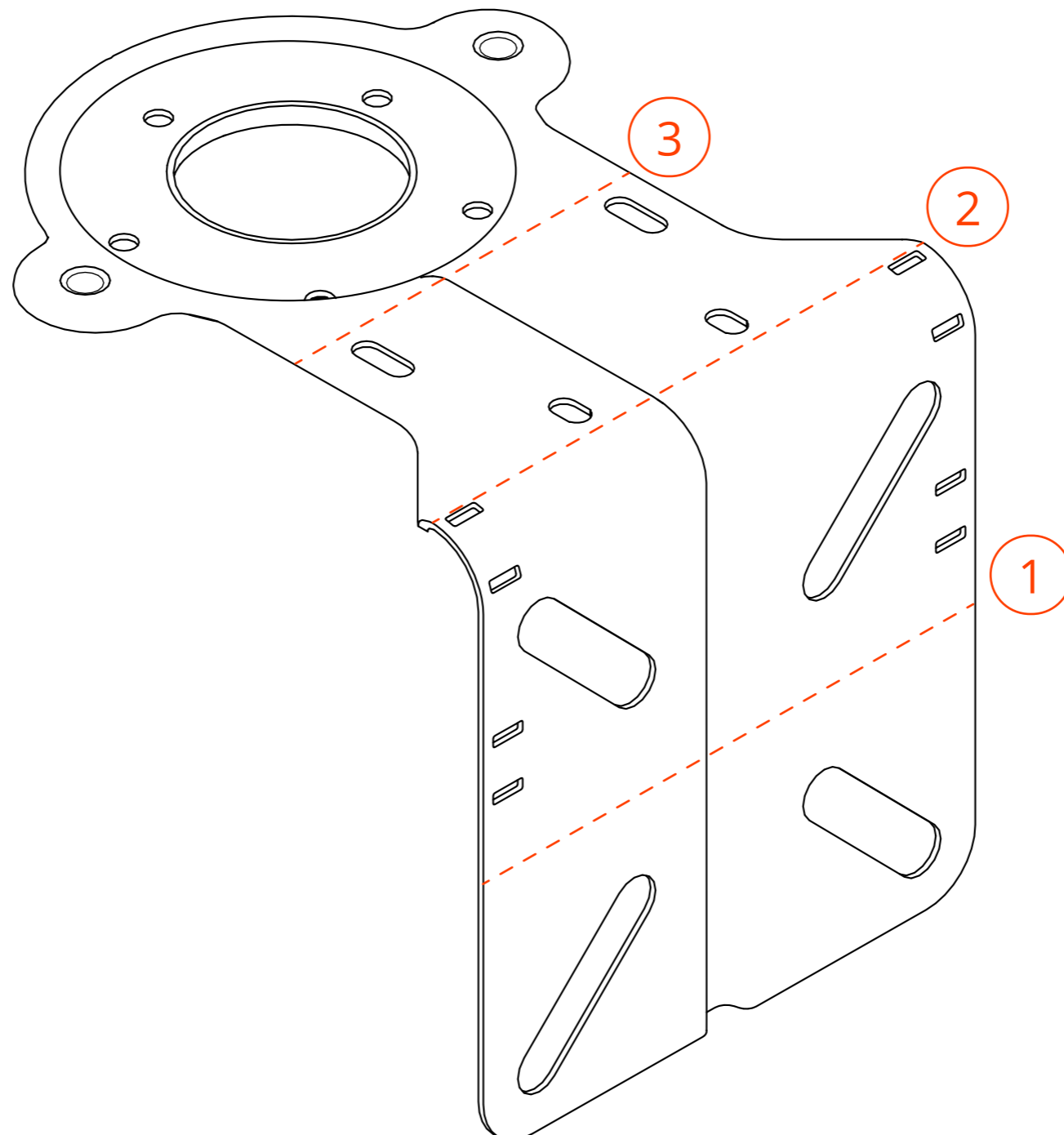
Modification of the bracket is not required.



BRACKET MODIFICATION

IMPORTANT! The shortening of the bracket part(s) should be done only for certain installation methods.

To avoid errors when modifying the bracket, please follow the cutting line diagram:



WARRANTY CONDITIONS

The THOR electronic exhaust system must be installed professionally at certified installation centers. An individual undertaking the installation assumes full responsibility for any damage to the vehicle resulting from lack of experience, necessary knowledge, or proper tools for the system's installation.

Components of the THOR system that fail within the warranty period due to manufacturing defects will be replaced or repaired by the installer.

Components that are functioning properly are not eligible for warranty replacement.

Decisions made by the manufacturer or installer regarding claims are final. Replaced defective parts remain the property of the manufacturer or installer.

The customer loses the right to warranty service in the following cases:

- After the warranty period has expired.
- If installation, operation, transportation, or storage rules are violated.
- If there are mechanical damages, including traces of falls, impacts, exposure to fire, or contact with aggressive liquids or water.
- If the electronic exhaust system components are used together with parts from other manufacturers without appropriate approval from THOR.
- If attempting self-repair.
- If there are signs of disassembly or reassembly of system components.

After system removal, the warranty for a new installation must be coordinated through an additional request to THOR's technical support service.

Maintenance of the THOR electronic exhaust system past the warranty period is the responsibility of the customer.

INFORMATION ABOUT THE MANUFACTURER

Limited Liability Company «Car Systems»

Website: www.thor-tuning.com

Email: service@thor-tuning.com





Email: service@thor-tuning.com
www.thor-tuning.com